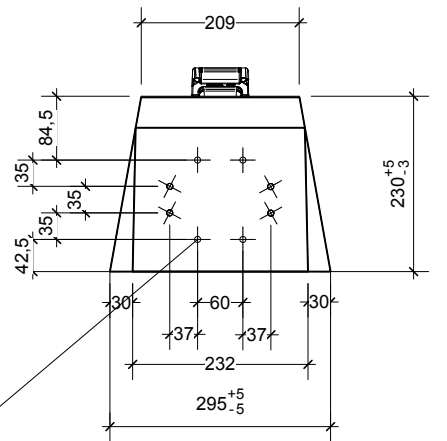
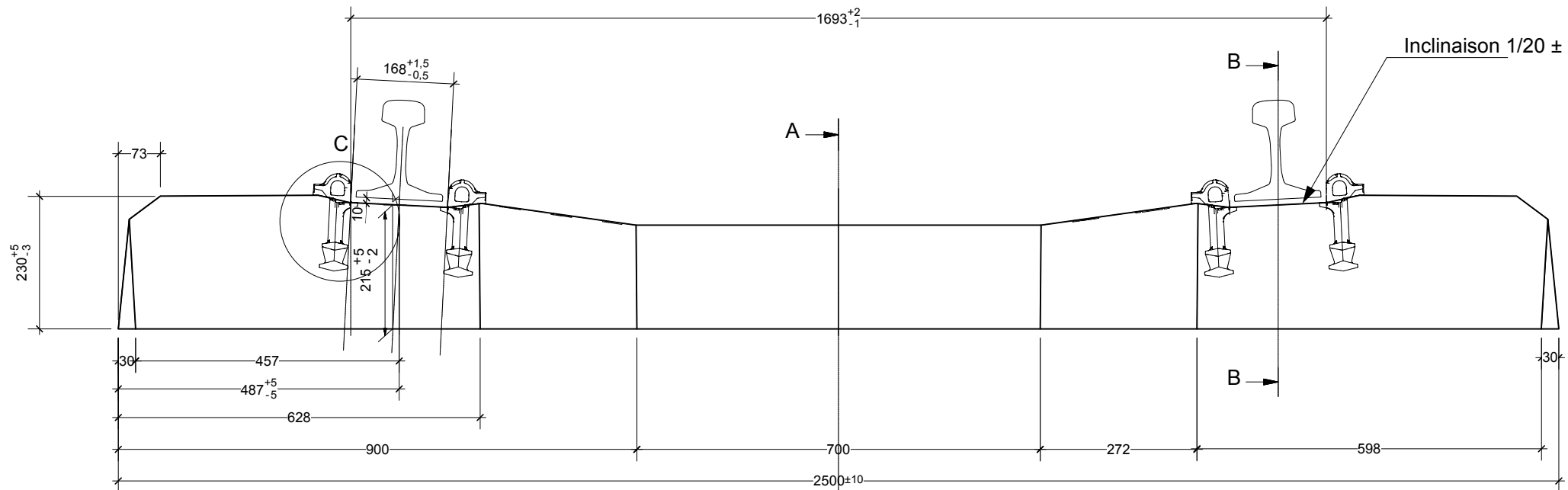
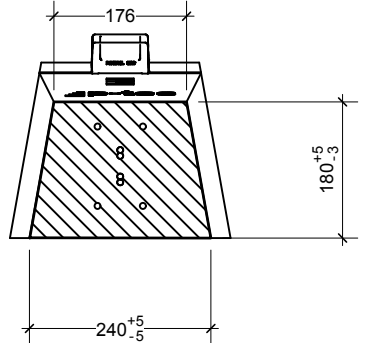


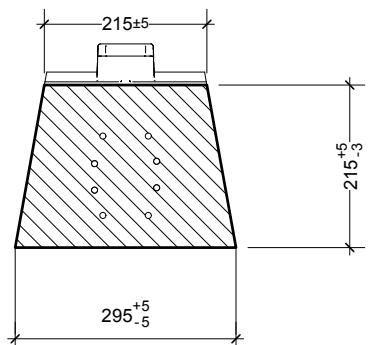
(1:5)



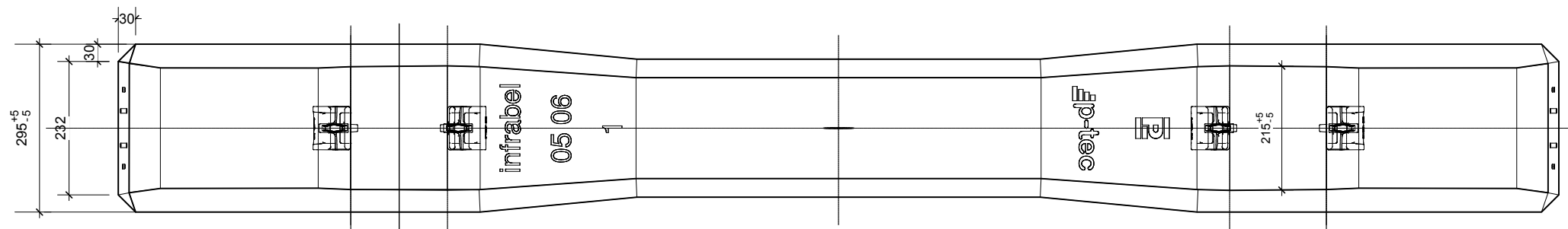
A-A (1:5)



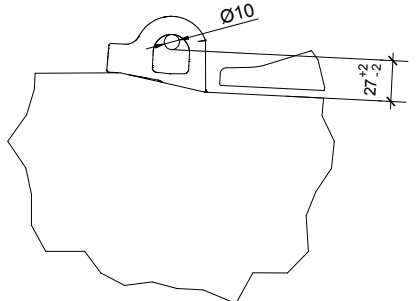
B-B (1:5)



8x8mm FILS PROFILES
ST 1470/1670
NBN I 10-002. I 10-003



C (0,40 : 1) Epaulements (NBN EN 1563)
6522 Pandrol



VOLUME DE BETON: 119,4 L
POIDS DE LA TRAVERSE: 294 kg
POIDS NET DE L'ARMATURE: 7.80 kg

FORCE DE PRECONTRAINTE: 523 kN ± 10kN

P-TEC International GmbH Eberstraße 11-13 82538 Geretsried / Germany Tel: +49(0)8171 999 290 Fax: +49(0)8171 999 252		Datum		Name	
Gezeichnet		04.05.2006		Hoeltzl	
Kontrolliert					
Norm					
Diese Zeichnung ist geistiges Eigentum von P-TEC. This drawing is intellectual property of P-TEC.					
A		adapté suivant ST L23 - 2006/26/02/07		mw	
Status	Änderungen	Datum	Name		
				06-B-6958	
				1:5	
				A1	

Traverse Monobloc Précontrainte M41
Bau: **TRAVERSE M41**